



TOYOTA

2023 Corolla Hatchback

2023 COROLLA HATCHBACK

Full speed ahead.

Low to the ground and lightweight, the 2023 Toyota Corolla Hatchback will reintroduce you to the thrill of driving. Its sporty exterior highlights its practical five-door design, while the interior boasts the latest tech. So, whether you're cruising through downtown tonight or going away for the weekend, Corolla Hatchback is ready for whatever's next.



XSE shown in Blue Crush Metallic with available accessory rear window spoiler; SE shown in Wind Chill Pearl.¹



See numbered footnotes in Disclosures section.

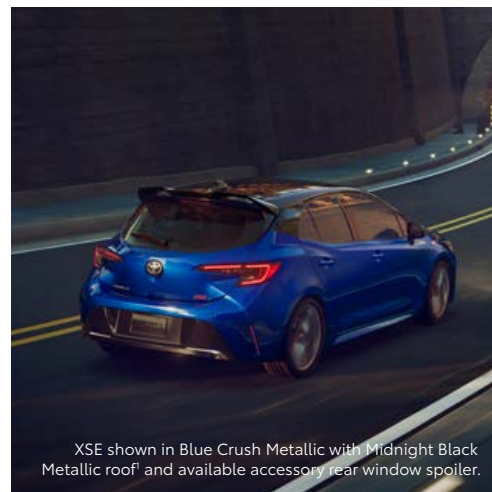
PERFORMANCE

Pump up the power.

Corolla Hatchback's standard 2.0L Dynamic Force Engine releases endorphins the moment you step on the gas. With its low and lightweight body, Corolla Hatchback will punch up your enthusiasm around every curve. Rest assured; fast-paced fun is waiting for you the second you start the engine.

2.0L Dynamic Force Engine

Under the hood, the efficient 2.0L Dynamic Force Engine punches up your adrenaline the moment you shift into drive.



XSE shown in Blue Crush Metallic with Midnight Black Metallic roof¹ and available accessory rear window spoiler.

Paddle shifters

Hone your paddle-shifting skills with our Dynamic-Shift CVT, which combines the immediate response of a traditional first gear with the efficiency of a Continuously Variable Transmission (CVT).

Drive Modes

Instantly tailor your drive to suit your whim with a press of a button. Sport Mode indulges your spirited side with a sharper acceleration feel, while Eco Mode adjusts throttle input to help maximize your efficiency. Normal Mode blends fuel economy with performance.

Optimized suspension

Wring more excitement out of every corner. Corolla Hatchback's optimized suspension helps reduce body roll, keeping it planted when things get twisty, and smoothing out the bumps of the everyday drive.



Left: XSE interior shown with paddle shifters. Right: XSE interior shown.



XSE shown in Blue Crush Metallic with available accessory rear window spoiler.

EXTERIOR

Fun at first sight.

Corolla Hatchback has unforgettable charisma. With its available two-tone paint job with black roof,¹ side mirrors and spoiler, the sporty hatchback design makes a lasting first impression. After you park, you'll catch yourself looking over your shoulder to steal one last glance.



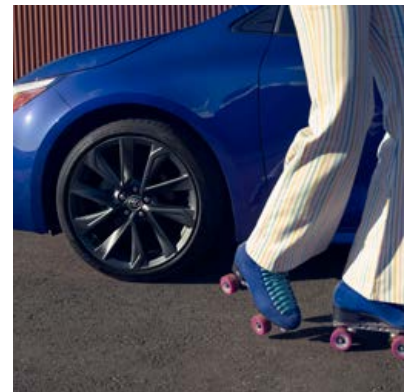
XSE shown in Blue Crush Metallic with available accessory rear window spoiler.

LED fog lights

Available LED fog lights peek out on either side of the gloss black front grille surround, shining a light on Corolla Hatchback's aggressive front end.

18-in. alloy wheels

Available 18-in. alloy wheels² add to the unique profile of Corolla Hatchback. Every stoplight is a chance to turn heads. Every spoke on the wheels is crafted to enhance style.

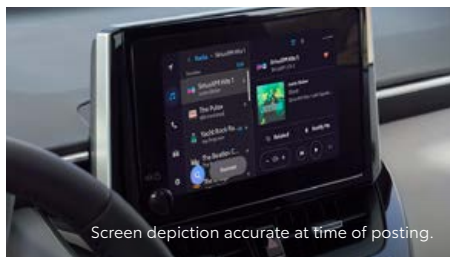


See numbered footnotes in Disclosures section.

INTERIOR

The great indoors.

Corolla Hatchback's premium piano-black accents, soft-touch materials and contrast stitching on the dash and doors show that no inch of the interior was overlooked. Available 8-way power-adjustable seats with SofTex^{®19} trim with sport fabric insert and dual zone automatic climate control also let you personalize the ease in every drive.



8-in. multimedia touchscreen

A stunning 8-in. touchscreen display makes staying connected simple. Tune in with wireless Apple CarPlay^{®3} or Android Auto^{™4} while available Wi-Fi Connect⁵ and Safety Connect^{®6} help provide added peace of mind.

Fully digital gauge cluster

An available 7-in. fully digital gauge cluster puts driving information right before your eyes. You can also use the steering wheel controls to scroll through songs, make calls and more.

Cargo space

Go ahead and load up. With fold-flat rear seats and 17.8 cubic feet of cargo volume,⁷ Corolla Hatchback has room for the whole crew and practically all their stuff. It's ready for adventure whenever you are.

See numbered footnotes in Disclosures section.

Technology that keeps up with you.

Take advantage of smart and convenient technologies designed to simplify your everyday life. Trial periods are available on select models for the listed connected services.*



Toyota App

With active applicable Connected Services⁸ subscriptions, the Toyota app⁹ allows you to stay connected to your Corolla Hatchback wherever you go. Available for Apple^{®10} and Android^{™11} devices.

- ✓ Remote Vehicle Start¹² and Lock/Unlock Doors
- ✓ Check Up on Your Toyota's Health
- ✓ Schedule a Service Appointment
- ✓ Shop for Genuine Toyota Parts and Accessories
- ✓ Make a Payment With Your TFS Account



Safety Connect[®]

Round-the-clock help when the unexpected happens.⁶

- ✓ Emergency Assistance Button (SOS)
- ✓ Enhanced Roadside Assistance¹³
- ✓ Automatic Collision Notification
- ✓ Stolen Vehicle Locator¹⁴
- ✓ Collision Assistance



Service Connect

Being proactive to help keep your vehicle in peak condition.¹⁵

- ✓ Vehicle Health Report
- ✓ Vehicle Maintenance Alert
- ✓ Maintenance Reminder



Wi-Fi Connect

Turn your Toyota into a hotspot with 4G connectivity.⁵

- ✓ AT&T Hotspot
- ✓ Integrated Streaming
 - Apple Music¹⁶ (separate subscription required)
 - Amazon Music¹⁷ (separate subscription required)



Drive Connect

Navigation solutions that use the latest maps, voice commands and live agent assistance.¹⁸

- ✓ Cloud Navigation
- ✓ Destination Assist²⁰
- ✓ Intelligent Assist



Remote Connect

Manage your vehicle through the Toyota app, including Remote Start and much more.¹²

- ✓ Remote Vehicle Start
- ✓ Unlock/Lock
- ✓ Remote Notifications
- ✓ Guest Driver
- ✓ Smartwatch Compatibility²¹
- ✓ Google Assistant[™]-Enabled²² Device Capability

*To view included trial details, please visit toyota.com/connected-services.

Feature availability may vary by model grade. See numbered footnotes in Disclosures section.



SE interior shown in Moonstone fabric. Screen depiction accurate at time of posting.



Wireless Apple CarPlay®

Bring along a familiar face. With Corolla Hatchback's Apple CarPlay^{®3} compatibility, you can use your compatible iPhone^{®23} with the multimedia system to get directions, make calls, send and receive messages and listen to music, all while staying focused behind the wheel.



Wireless Android Auto™

Stay connected on the road. By connecting your compatible Android^{™11} phone with the audio multimedia system, Android Auto^{™4} lets you access your Google Assistant,^{™22} get real-time traffic alerts, make and receive phone calls, listen to your favorite soundtrack and more.

AUDIO MULTIMEDIA

Amplify your drive.

Enhance every drive with an experience that's all about you. Whether enjoying the sounds of your favorite soundtrack or interacting with an interface that you're familiar with, you'll always be surrounded by comfort.



SiriusXM® Platinum Plan 3-month trial

SiriusXM^{®24,25} has premium entertainment that you won't hear anywhere else. With the Platinum Plan 3-month trial, you get 425+ channels, including 165+ channels in your vehicle, to enjoy ad-free music, plus sports, news, talk, comedy and more. Experience even more on the SXM[®] App, featuring expertly curated podcasts, Xtra channels of music, personalized Pandora[®] stations, SiriusXM[®] video and more.



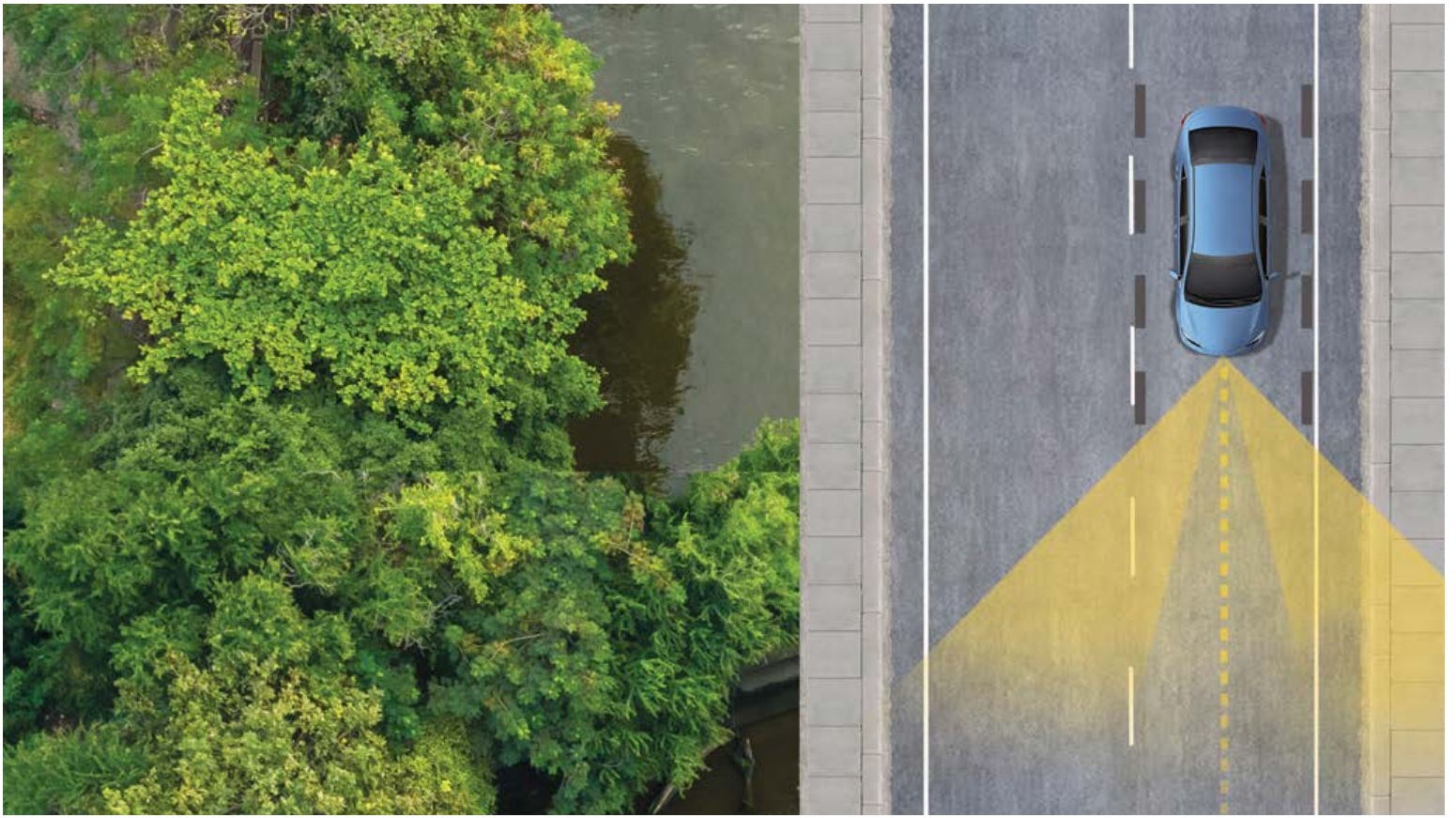
JBL®

Immerse yourself in quality sound with Corolla Hatchback's available JBL^{®26} Audio system. An 8-speaker, 800-watt audio system, equipped with an amplifier, it provides phenomenal sound that amplifies every drive.



Screen depiction accurate at time of posting.

Feature availability may vary by model grade. See numbered footnotes in Disclosures section.



TOYOTA SAFETY SENSE™ 3.0 (TSS 3.0)

Peace of mind comes standard.

Toyota Safety Sense™ 3.0 (TSS 3.0)²⁷ is a bundle of active safety features included on many new Toyota vehicles at no additional cost. These innovative features were designed to help protect you and your passengers from harm.



Pre-Collision System with Pedestrian Detection²⁹



Proactive Driving Assist²⁸



Full-Speed Range Dynamic Radar Cruise Control³⁰



Lane Departure Alert with Steering Assist³¹



Automatic High Beams³²



Lane Tracing Assist³³



Road Sign Assist³⁴

COROLLA HATCHBACK MODELS



SE

Includes these key features

Mechanical/Performance

- ✓ 2.0L 4-cylinder Dynamic Force Engine with 169 hp
- ✓ Dynamic-Shift Continuously Variable Transmission (CVT)
- ✓ Normal, Eco and Sport driving modes
- ✓ Front-Wheel Drive (FWD)
- ✓ Up to 32 city/41 highway/35 combined EPA-est. mpg³⁵

Exterior Features

- ✓ LED headlights and LED Daytime Running Lights (DRL) with auto on/off feature
- ✓ 16-in. alloy wheels
- ✓ Gloss black front upper grille surround
- ✓ Color-keyed front lower grille surround
- ✓ Color-keyed rear spoiler
- ✓ Color-keyed heated power outside mirrors with turn signal indicators
- ✓ Single exhaust
- ✓ Color-keyed rear diffuser surround

Interior Features

- ✓ Automatic climate control
- ✓ Smart Key System with Push Button Start
- ✓ 4.2-in. Multi-Information Display (MID)
- ✓ Premium leather-trimmed steering wheel
- ✓ Paddle shifters
- ✓ Fabric sport seats include:
 - 60/40 split fold-down rear seats
- ✓ Four USB-C charging ports³⁶
- ✓ Electric Parking Brake (EPB)³⁷ with Brake Hold³⁸ function

Audio Multimedia

- ✓ Toyota Audio Multimedia includes:
 - 8-in. touchscreen with six speakers
 - Wireless Apple CarPlay^{®3} & Android Auto^{™4} compatible
 - SiriusXM^{®24} with 3-month Platinum Plan trial subscription²⁵
- ✓ Connected Services⁸ Safety Connect[®] and Service Connect trials⁵ See toyota.com for details. 4G network dependent.

Safety Features

- ✓ Toyota Safety Sense[™] 3.0 (TSS 3.0)²⁷
- ✓ Star Safety System[™]
- ✓ Ten airbags³⁹

Packages/Options

- ✓ SE Package includes:
 - Blind Spot Monitor (BSM)⁴⁰ with Rear Cross-Traffic Alert (RCTA)⁴¹
- ✓ Enhanced cargo space⁷



XSE

Adds to or replaces features offered on SE

Mechanical/Performance

- ✓ 2.0L 4-cylinder Dynamic Force Engine with 169 hp
- ✓ Dynamic-Shift Continuously Variable Transmission (CVT)
- ✓ Normal, Eco and Sport driving modes
- ✓ Front-Wheel Drive (FWD)
- ✓ Up to 30 city/38 highway/33 combined EPA-est. mpg³⁵

Exterior Features

- ✓ LED headlights and LED Daytime Running Lights (DRL) with auto on/off feature
- ✓ Integrated LED fog lights
- ✓ 18-in. alloy wheels² with graphite-colored finish
- ✓ Gloss black front upper grille surround
- ✓ Color-keyed front lower grille surround
- ✓ Color-keyed rear spoiler
- ✓ Color-keyed heated power outside mirrors with turn signal indicators
- ✓ Single exhaust with dual chrome-colored rear diffuser accents

Interior Features

- ✓ Dual zone automatic climate control
- ✓ Smart Key System with Push Button Start
- ✓ 7-in. fully digital gauge cluster
- ✓ Premium leather-trimmed steering wheel
- ✓ Paddle shifters
- ✓ Softex^{®19} with sport fabric insert trim include:
 - Heated front seats with sport bolsters
- ✓ Four USB-C charging ports³⁶
- ✓ Electric Parking Brake (EPB)³⁷ with Brake Hold³⁸ function
- ✓ Qi-compatible wireless smartphone charging⁴²

Audio Multimedia

- ✓ Toyota Audio Multimedia includes:
 - 8-in. touchscreen
 - Wireless Apple CarPlay^{®3} & Android Auto^{™4} compatible
 - SiriusXM^{®24} with 3-month Platinum Plan trial subscription²⁵
- ✓ JBL[®] Premium Audio including eight speakers and amplifier
- ✓ Connected Services⁸ Safety Connect[®] and Service Connect trials⁵ See toyota.com for details. 4G network dependent.

Safety Features

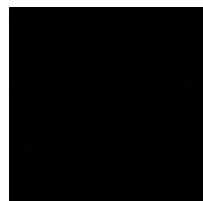
- ✓ Toyota Safety Sense[™] 3.0 (TSS 3.0)²⁷
- ✓ Star Safety System[™]
- ✓ Ten airbags³⁹

- ✓ Blind Spot Monitor (BSM)⁴⁰ with Rear Cross-Traffic Alert (RCTA)⁴¹

Options and Packages

- ✓ Enhanced cargo space⁷

COROLLA HATCHBACK COLORS & TRIMS



Midnight Black Metallic



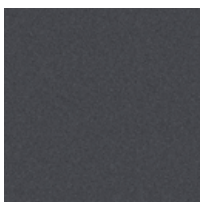
Blue Crush Metallic



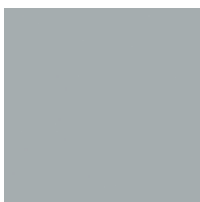
Finish Line Red¹



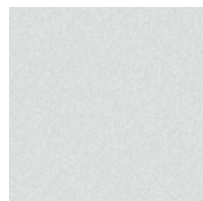
Inferno



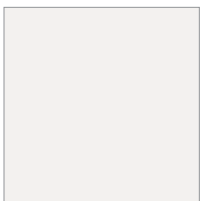
Magnetic Gray Metallic



Classic Silver Metallic



Wind Chill Pearl¹



Ice Cap

SE fabric shown in Black



SE fabric shown in Moonstone



XSE combination SofTex^{®19} trim shown in Black



XSE combination SofTex^{®19} trim shown in Moonstone



Available Midnight Black Metallic roof¹



Blue Crush Metallic, Finish Line Red, Magnetic Gray Metallic, Classic Silver Metallic, Wind Chill Pearl

COROLLA HATCHBACK WHEELS



16-in. alloy wheels



18-in. alloy wheels² with graphite-colored finish

See numbered footnotes in Disclosures section.

COROLLA HATCHBACK ACCESSORIES

This is a great way to add extra personality to your Corolla Hatchback. Not every accessory is available in your area, so for a complete list of accessories, go to toyota.com/corollahatchback/accessories.



All-weather floor liners⁵⁴



Blackout emblem overlays



Cargo tray⁷



Doorsill protectors



Lower rocker appliqué



Rear window spoiler



Removable cross bars⁵⁵



TRD air filter



TRD oil filter

WARRANTIES

Every Toyota Car, Truck and SUV is built to exceptional standards. And that's not idle boasting. We back it up with these Limited Warranty Coverages:

Basic: 36 months/36,000 miles (all components other than normal wear and maintenance items).

Powertrain: 60 months/60,000 miles (engine, transmission/transaxle, drive system, seatbelts and airbags).

Rust-Through: 60 months/unlimited miles (corrosion perforation of sheet metal).

Emissions: Coverages vary under Federal and California regulations. Refer to applicable *Warranty and Maintenance Guide* for details.

Accessories: For Genuine Toyota Accessories purchased at the time of the new vehicle purchase, the Toyota Accessory Warranty coverage is in effect for 36 months/36,000 miles from the vehicle's in-service date, which is the same coverage as the Toyota New Vehicle Limited Warranty.

For Genuine Toyota Accessories purchased after the new vehicle purchase the coverage is 12 months, regardless of mileage, from the date the accessory was installed on the vehicle, or the remainder of any applicable new vehicle warranty, whichever provides greater coverage.

You may be eligible for transportation assistance if it's necessary that your vehicle be kept overnight for repairs covered under warranty. Please see your authorized Toyota dealership for further details.

For complete details about Toyota's warranties, please visit www.toyota.com, refer to the applicable *Warranty and Maintenance Guide* or see your Toyota dealer.

COROLLA HATCHBACK FEATURES⁴³

S = Standard O = Optional P = Available as part of a package

Exterior

	SE	XSE
LED headlights and LED Daytime Running Lights (DRL) with auto on/off feature	S	S
LED taillights	S	S
Integrated LED fog lights		S
Gloss black front grille surround	S	S
Color-keyed rear spoiler	S	S
Black rear spoiler	O	O
Single exhaust	S	
Single exhaust with dual chrome-colored rear diffuser accents		S
Color-keyed rear diffuser surround	S	S
Variable intermittent front and rear windshield wipers	S	S
Color-keyed heated power outside mirrors with turn signal indicators	S	S
Black heated power outside mirrors with turn signal indicators	O	O
Blind spot warning indicators ⁴⁰ on side mirrors	P	S
Color-keyed outside door handles	S	S
Color-keyed side rocker panels	S	S
Color-keyed roof-mounted shark-fin antenna	S	S
Black roof-mounted shark-fin antenna	O	O
Black roof ¹	O	O
16-in. alloy wheels with P205/55R16 tires	S	
18-in. graphite-colored alloy wheels with P225/40R18 tires ²		S

Interior

Automatic climate control	S	
Dual zone automatic climate control		S
Front console tray, rear console box and glove box	S	S
Power windows with one-touch auto up/down	S	S
4.2-in. Multi-Information Display (MID) with odometer, outside temperature, fuel economy and trip information, current/average fuel economy, distance to empty, average speed, trip distance with timer, TPMS ⁴⁴ scheduled maintenance, compass and warning messages	S	
7-in. fully digital gauge cluster with customizable settings, odometer, outside temperature, fuel economy and trip information, current/average fuel economy, distance to empty, average speed, trip distance with timer, TPMS ⁴⁴ scheduled maintenance, compass and warning messages		S
Fabric sport seats with 6-way adjustable driver's seat with seatback pocket; 4-way adjustable front passenger seat with seatback pocket	S	
Seats with SofTex ^{®19} trim with sport fabric insert; 8-way power-adjustable driver's seat with seatback pocket; 4-way adjustable front passenger seat with seatback pocket		S
60/40 split fold-down rear seats with center armrest and cup holders	S	S
Premium leather-trimmed tilt/telescopic steering wheel with paddle shifters and audio, Multi-Information Display (MID), Bluetooth ^{®45} hands-free phone and music streaming, and voice-command controls	S	S
Paddle shifters	S	S
Sport Mode	S	S
Active Cornering Assist (ACA)	S	S
Vehicle speed-sensing Electric Power Steering (EPS)	S	S
Smart Key remote keyless entry system with Push Button Start	S	S
Covered center console, armrest and storage	S	S
One 12V auxiliary power outlet ⁴⁶	S	S
Four USB-C charge ports ³⁶	S	S
Qi-compatible wireless smartphone charging ⁴²		S
ISO-FIX Child Restraint System (CRS) anchors for outboard rear seating positions	S	S
Top tether anchor	S	S
Electric Parking Brake (EPB) ³⁷ with Brake Hold ³⁸ function	S	S

COROLLA HATCHBACK FEATURES

S = Standard O = Optional P = Available as part of a package

Audio Multimedia

	SE	XSE
8-in. Toyota Audio Multimedia touchscreen — includes six speakers, wireless Apple CarPlay ^{®3} & Android Auto ^{™44} compatible and SiriusXM ^{®24} with 3-month Platinum Plan trial subscription. ²⁵ See toyota.com/audio-multimedia for details.	S	
8-in. Toyota Audio Multimedia touchscreen — includes wireless Apple CarPlay ^{®3} & Android Auto ^{™44} compatible and SiriusXM ^{®24} with 3-month Platinum Plan trial subscription. ²⁵ See toyota.com/audio-multimedia for details.		S
JBL ^{®26} Premium Audio including eight speakers and amplifier		S

Connected Services

Drive Connect ¹⁸ — includes Cloud Navigation with Google Points-of-Interest (POI) data, Intelligent Assistant ¹⁴ with Hey, Toyota, and Destination Assist ²⁰ Subscription required.	S	
Drive Connect ¹⁸ with 1-year trial subscription — includes Cloud Navigation with Google Points-of-Interest (POI) data, Intelligent Assistant ¹⁴ with Hey, Toyota, and Destination Assist ²⁰ Subscription required after trial.		S
Safety Connect ^{®6} with up to 10-year trial subscription; 4G network dependent — includes Emergency Assistance, Stolen Vehicle Locator, ¹⁴ Roadside Assistance ¹⁹ and Automatic Collision Notification. Subscription required after trial.	S	S
Service Connect ¹⁵ with up to 10-year trial subscription; 4G network dependent — receive personalized maintenance updates and vehicle health reports. Subscription required after trial.	S	S
Remote Connect ¹² with 1-year trial subscription — remotely interact with your vehicle through the Toyota app via your smartwatch, ²¹ Amazon Alexa-enabled ⁵⁷ devices, and Google Assistant™-enabled ²² devices. Allowing you to lock/unlock doors, start and stop the vehicle, use Remote Climate features, use Remote Charging features, locate your last parked location, check vehicle status and monitor guest drivers. Subscription required after trial.	S	S
Wi-Fi Connect ⁵ — with 30-day or up to 3 GB trial subscription. With AT&T Wi-Fi hotspot and Integrated Streaming (Apple Music ^{®16} and Amazon Music ^{™17}) compatibility. Subscription required after trial.	S	S

Safety/Convenience

STAR SAFETY SYSTEM ™ Star Safety System™ — includes Enhanced Vehicle Stability Control (VSC), ⁴⁷ Traction Control (TRAC), 4-wheel Anti-lock Brake System (ABS), Electronic Brake-force Distribution (EBD), Brake Assist (BA) ⁴⁸ and Smart Stop Technology [®] (SST) ⁴⁹	S	S
Ten airbags ³⁹ — includes Advanced Airbag System with driver and front passenger dual stage airbags, front side airbags, driver knee airbag, passenger seat cushion airbag, front and rear side curtain airbags, and seat-mounted side airbags	S	S
Driver and front passenger Whiplash-Injury-Lessening (WIL) ⁵⁰ seats	S	S
3-point seatbelts for all seating positions; driver-side Emergency Locking Retractor (ELR) and Automatic/Emergency Locking Retractor (ALR/ELR) on all passenger belts	S	S
LATCH (Lower Anchors and Tethers for CHildren) includes lower anchors on outboard rear seats	S	S
Child-protector rear door locks and power window lockout control	S	S
Energy-absorbing collapsible steering column	S	S
Front and rear energy-absorbing crumple zones	S	S
Side-impact door beams	S	S
Tire Pressure Monitor System (TPMS) ⁴⁴	S	S
Safety Connect ^{®6} with up to 10-year trial subscription; 4G network dependent — includes Emergency Assistance, Stolen Vehicle Locator, ¹⁴ Roadside Assistance ¹⁹ and Automatic Collision Notification. Trial subscription is included at no additional cost.	S	S
Service Connect ¹⁵ with up to 10-year trial subscription; 4G network dependent — receive personalized maintenance updates and vehicle health reports. Subscription required.	S	S
Toyota Safety Sense™ 3.0 (TSS 3.0) ²⁷ — Pre-Collision System with Pedestrian Detection (PCS w/PD) ²⁹ Proactive Driving Assist (PDA), ²⁸ Lane Departure Alert with Steering Assist (LDA w/SA), ³¹ Automatic High Beams (AHB) ³² Full-Speed Range Dynamic Radar Cruise Control (DRCC) ³⁰ Road Sign Assist (RSA) ³⁴ and Lane Tracing Assist (LTA) ³³	S	S
Blind Spot Monitor (BSM) ⁴⁰ with Rear Cross-Traffic Alert (RCTA) ⁴¹	P	S
Hill Start Assist Control (HAC) ⁵¹	S	S
Anti-theft system with engine immobilizer ⁵²	S	S
ToyotaCare ⁵³ featuring a no cost maintenance plan and Roadside Assistance	S	S

COROLLA HATCHBACK SPECIFICATIONS

S = Standard O = Optional P = Available as part of a package

Mechanical/Performance

	SE	XSE
ENGINE		
2.0L Dynamic Force 4-cylinder DOHC 16-Valve chain drive with Dual Variable Valve Timing with intelligence (VVT-i); 169 hp @ 6600 rpm; 151 lb.-ft. @ 4800 rpm	S	S
EMISSION RATING		
Federal Environmental Protection Agency (EPA) Emission Standard Tier 3, Bin 30	S	S
California Air Resources Board (CARB) Emission Standard: Low Emission Vehicle III (LEV III), Super Ultra Low Emission Vehicle (SULEV) ⁵⁶	S	S
TRANSMISSION		
Dynamic-Shift Continuously Variable Transmission (CVT)	S	S
Sport Mode	S	S
DRIVETRAIN		
Front-Wheel Drive (FWD)	S	S
BODY CONSTRUCTION		
Unitized body	S	S
SUSPENSION		
MacPherson strut front suspension	S	S
Multi-link rear suspension	S	S
STEERING		
Electric Power Steering (EPS)	S	S
BRAKES		
Power-assisted ventilated 11.5-in. front disc brakes; solid 10.5-in. rear disc brakes	S	S
Anti-lock Brake System (ABS)	S	S
Vehicle Stability Control (VSC) ⁴⁷	S	S
Electronically Controlled Braking (ECB) system	S	S
DIMENSIONS		
EXTERIOR (in.)		
Overall height	57.1	57.1
Overall width	70.5	70.5
Overall length	172.0	172.0
Wheelbase	103.9	103.9
Ground clearance	5.1	5.1
Coefficient of drag (Cd)	.32	.32
INTERIOR (front/rear) (in.)		
Head room	38.4/37.6	38.4/37.6
Shoulder room	53.9/54.5	53.9/54.5
Hip room	53.9/45.5	53.9/45.5
Leg room	42.0/29.9	42.0/29.9
Seating capacity	5	5

Weights and Capacities

Curb weight (lbs.)	3060	3060
CAPACITIES		
EPA passenger volume (cu. ft.)	84.6	84.6
Cargo volume (cu. ft.) ⁷	17.8	17.8
Fuel tank (gal.)	13.2	13.2
WHEELS AND TIRES		
16-in. alloy wheels, silver metallic paint	S	
18-in. alloy wheels with graphite-colored finish ²		S
Type: All-Season	S	S
Spare: Temporary	S	S
Size: P205/55R16	S	
P225/40R18		S
MILEAGE ESTIMATES³⁵ (mpg city/highway/combined)		
Dynamic-Shift Continuously Variable Transmission (CVT)	32/41/35	30/38/33

DISCLOSURES

1. Extra-cost color. 2. Performance tires are expected to experience greater tire wear than conventional tires. Tire life may be less than 24,000 miles, depending upon driving conditions. 3. Apps and services are subject to change at any time without notice. Data charges may apply. Apple CarPlay® functionality requires a compatible iPhone® connected wirelessly to the vehicle. Apple CarPlay® is a registered trademark of Apple Inc. 4. Android™ and Android Auto™ are trademarks of Google LLC. To wirelessly use Android Auto™ on your car display, you need a compatible Android™ smartphone with an active data plan. You can check which smartphones are compatible at g.co/androidauto/requirements. 5. Eligible vehicle and wireless service required. Wi-Fi Connect depends on factors outside of Toyota's control, including an operative telematics device, a cellular connection, GPS signal, and the availability of a compatible wireless network, without which system functionality and availability may be limited or precluded. Wi-Fi Connect coverage and service not available everywhere. Valid in the contiguous U.S. and Alaska. Do not drive distracted. Go to att.com/toyota for terms and conditions. Data usage and charges apply. Up to 5 devices can be supported using in-vehicle connectivity. Apps and services subject to change at any time without notice. The Wi-Fi Connect trial begins at the time of enrollment and expires the earlier of 3GB data use or the 1-month trial period ends. Subscription required after trial. Integrated Streaming requires separate subscriptions to third-party provider services. Terms of Use apply. 6. Safety Connect® depends on factors outside of Toyota's control, including an operative telematics device, a cellular connection, GPS signal, and the availability of a compatible wireless network, without which system functionality and availability may be limited or precluded, including access to response center and emergency support. Stolen vehicle police report required to use Stolen Vehicle Locator. Automatic Collision Notification activates only in limited circumstances. Requires app download/registration and subscription after trial (if applicable). Service subject to change at any time without notice. Terms of Use apply. Service may vary by vehicle and region. See usage precautions and service limitations in *Owner's Manual* and at toyota.com/connected-services for additional details. To learn about Toyota's Connected Services data collection, use, sharing and retention practices, please visit <https://www.toyota.com/privacyvts/>. The Safety Connect® trial period (if applicable) is at no extra cost and begins on the original date of purchase or lease of a new vehicle. Subscription required after trial to access the service. 7. Cargo and load capacity limited by weight and distribution. Always properly secure cargo and cargo area. 8. Connected Services depend on factors outside Toyota's control, including an operative telematics device, a cellular connection, GPS signal and the availability of a compatible wireless network, without which system functionality and availability may be limited or precluded, including access to response center and emergency support. Service may vary by vehicle and region. Apps and services subject to change at any time without notice. Requires app download/registration and subscription after trial (if applicable). Terms of Use apply. Data usage and charges may apply. See usage precautions and service limitations in *Owner's Manual* and <https://www.toyota.com/connected-services/> for additional limitations and details. To learn about Toyota's Connected Services data collection, use, sharing and retention practices, please visit <https://www.toyota.com/privacyvts/>. All trials begin on the original date of purchase or lease of a new vehicle, with the exception of Wi-Fi for which the trial begins at the time of activation. Paid subscription required after trial in order to continue accessing the respective services. Terms of Use apply. 9. Toyota app requires an active Remote Connect trial or subscription. 10. Apple and the Apple logo are trademarks of Apple Inc., registered in the U.S. and other countries. 11. Android is a trademark of Google LLC. 12. Use only if aware of circumstances surrounding vehicle and it is legal and safe to do so (e.g., do not remotely start engine if vehicle is in an enclosed space or vehicle is occupied by a child). Remote Connect depends on factors outside of Toyota's control, including an operative telematics device, a cellular connection, GPS signal, and the availability of a compatible wireless network, without which system functionality and availability may be limited or precluded. Digital Key also requires Bluetooth® connectivity. Service may vary by vehicle and region. Requires app download and registration/subscription after trial (if applicable). Terms of Use apply. Data charges may apply. Remote start/stop not available on manual transmission-equipped vehicles. Services subject to change at any time without notice. See usage precautions and service limitations in *Toyota Owner's Manual* and at <https://www.toyota.com/connected-services/> for additional details. To learn about Toyota's Connected Services data collection, use, sharing and retention practices, please visit <https://www.toyota.com/privacyvts/>. The Remote Connect trial period (if applicable) is at no extra cost and begins on the original date of purchase or lease of a new vehicle. Subscription required after trial to access the service. Terms of Use apply. 13. Requires adequate cellular coverage and GPS signal strength. May not work in all areas. Service may vary by vehicle and region. See Toyota Dealer for details and exclusions. 14. Building and/or parking structures may limit system effectiveness. Stolen vehicle police report required to use Stolen Vehicle Locator. For additional assistance contact the Toyota Customer Experience Center at 1-800-331-4331. 15. Information provided is based on the last time data was collected from the vehicle and is not real-time data. Service Connect depends on factors outside of Toyota's control, including an operative telematics device, a cellular connection, GPS signal, and the availability of a compatible wireless network, without which system functionality and availability may be limited or precluded. Service may vary by vehicle and region. Requires app download/registration and subscription after trial. Service subject to change at any time without notice. Terms of Use apply. Data charges may apply. See usage precautions and service limitations in *Owner's Manual* and at toyota.com/connected-services for additional details. To learn about Toyota's Connected Services data collection, use, sharing and retention practices, please visit <https://www.toyota.com/privacyvts/>. The Service Connect trial period is at no extra cost and begins on the original date of purchase or lease of a new vehicle. Service Connect is not renewable as a stand-alone service and requires a subscription to any of Safety Connect®, Remote Connect or Drive Connect upon trial expiration. 16. Apple Music and the Apple logo are trademarks of Apple Inc., registered in the U.S. and other countries. Requires Wi-Fi Connect subscription after trial (if applicable) and your own Apple Music account. 17. Amazon Music, and all related marks are trademarks of Amazon Technologies, Inc. or its affiliates. 18. Drive Connect availability and accuracy depend on factors outside of Toyota's control, including an operative telematics device, a cellular connection, GPS signal, and the availability of a compatible wireless network, without which system functionality and availability may be limited or precluded. Services not available in every city or roadway. Services subject to change at any time without notice. Requires app download/registration and subscription required after trial (if applicable). Terms of Use apply. See *Owner's Manual* and <https://www.toyota.com/connected-services/> for additional limitations and details. To learn about Toyota's Connected Services data collection, use, sharing and retention practices, please visit <https://www.toyota.com/privacyvts/>. The Drive Connect trial period is at no extra cost and begins on the original date of purchase or lease of a new vehicle. Paid subscription required after trial (if applicable) to access the service. Terms of Use apply. 19. SofTex® is a registered trademark of Toyota Motor Sales, U.S.A., Inc. 20. Destination Assist depends on factors outside of Toyota's control, including an operative telematics device, a cellular connection, GPS signal, and the availability of a compatible wireless network, without which system functionality and availability may be limited or precluded. Use common sense when relying on this information. Service may vary by vehicle and region. Registration required. Subscription required after trial. Services subject to change at any time without notice. Terms of Use apply. Data charges may apply. See *Owner's Manual* and toyota.com/connected-services for additional limitations and details. To learn about Toyota's Connected Services data collection, use, sharing and retention practices, please visit <https://www.toyota.com/privacyvts/>. The Destination Assist trial period is at no extra cost and begins on the original date of purchase or lease of a new vehicle. Paid subscription required after trial to access the service. 21. Not all smartwatches are compatible with Remote Connect: Samsung Gear, Fitbit, Garmin are not compatible. 22. Google is a trademark of Google LLC. 23. iPhone® is a registered trademark of Apple Inc. All rights reserved. 24. Trial length and service availability may vary by model, model year or trim. Service will automatically stop at the end of your trial subscription period unless you decide to continue service. If you do not wish to enjoy your trial, you can cancel by calling the number below. All SiriusXM services require a subscription, each sold separately by SiriusXM after the trial period. **Service subject to the SiriusXM Customer Agreement and Privacy Policy; visit www.siriusxm.com to see complete terms and how to cancel which includes calling 1-866-635-2349.** Some services and features are subject to device capabilities and location availability. All fees, content and features are subject to change. SiriusXM, Pandora and all related logos are trademarks of Sirius XM Radio Inc. and its respective subsidiaries. 25. SiriusXM trial length and service availability may vary by model, model year or trim. 26. JBL® is a registered trademark of Harman International Industries, Inc. 27. Toyota Safety Sense™ effectiveness is dependent on many factors including road, weather and vehicle conditions. Drivers are responsible for their own safe driving. Always pay attention to your surroundings and drive safely. See *Owner's Manual* for additional limitations and details. 28. Proactive Driving Assist (PDA) is designed to detect certain objects or curves in the road and provide gentle braking and/or steering support. PDA is not a substitute for safe and attentive driving. System effectiveness depends on many factors, such as speed, size and position of detected objects and weather, light and road conditions. See *Owner's Manual* for additional limitations and details. 29. The Pre-Collision System (PCS) with Pedestrian Detection (PD) is designed to determine if impact is imminent and help reduce impact speed and damage in certain frontal collisions involving a vehicle, a pedestrian or a bicyclist. PCS w/PD is not a substitute for safe and attentive driving. System effectiveness depends on many factors, such as speed, size and position of pedestrian or bicyclist and weather, light and road conditions. See *Owner's Manual* for additional limitations and details. 30. Full-Speed Range Dynamic Radar Cruise Control (DRCC) is designed to assist the driver and is not a substitute for safe and attentive driving practices. System effectiveness is dependent on many factors including road, weather and traffic conditions. Vehicles with manual transmission have regular DRCC. See *Owner's Manual* for additional limitations and details. 31. Lane Departure Alert with Steering Assist is designed to read visible lane markers under certain conditions. It provides a visual and audible alert and slight steering force when lane departure is detected. It is not a collision-avoidance system or a substitute for safe and attentive driving. Effectiveness is dependent on many factors including road, weather and vehicle conditions. See *Owner's Manual* for additional limitations and details. 32. Automatic High Beams operate at speeds above 25 mph. Factors such as a dirty windshield, weather, lighting and terrain limit effectiveness, requiring the driver to manually operate the high beams. See *Owner's Manual* for additional limitations and details. 33. The Lane Tracing Assist (LTA) lane centering function is designed to read visible lane markers and detect other vehicles under certain conditions. It is only operational when DRCC is engaged. Not available on vehicles with manual transmissions. See *Owner's Manual* for additional limitations and details. 34. Do not rely exclusively on Road Sign Assist (RSA). RSA is a driver support system that utilizes the vehicle's forward-facing camera and navigation system (when data is available) to recognize certain road signs and provide information to the driver via the multi-information display and/or Head-Up Display. Effectiveness is dependent on road, weather, vehicle and sign conditions. Use common sense when using RSA and do not drive distracted. See *Owner's Manual* for additional limitations and details. 35. EPA-estimated 32 city/41 hwy/35 combined mpg rating for 2023 Corolla Hatchback SE; EPA-estimated 30 city/38 hwy/33 combined mpg rating for 2023 Corolla Hatchback XSE. Use for comparison purposes only. Your mileage will vary for many reasons, including your vehicle's condition and how/where you drive. See www.fueleconomy.gov. 36. May not be compatible with all mobile phones, MP3/WMA players and like models. 37. When the system is on, Electric Parking Brake is designed to engage the Parking Brake under limited conditions. It may not hold the vehicle under all conditions. See *Owner's Manual* for additional limitations and details. 38. When the system is on, Brake Hold is designed to keep the brakes engaged after the driver brings the vehicle to a complete stop. It may not hold the vehicle under certain conditions and does not function when the vehicle is in Reverse. Brake Hold is not a substitute for safe and attentive driving. See *Owner's Manual* for additional limitations and details. 39. Airbag systems are Supplemental Restraint Systems and are designed to inflate only under certain conditions and in certain types of severe collisions. To decrease the risk of injury from an inflating airbag, always wear seatbelts and sit upright in the middle of the seat as far back as possible. Do not put objects in front of an airbag or around the seatback. Do not use a rearward-facing child seat in any front passenger seat. See *Owner's Manual* for additional limitations and details. 40. Do not rely exclusively on the Blind Spot Monitor. Always look over your shoulder and use your turn signal. There are limitations to the function, detection and range of the monitor. See *Owner's Manual* for additional limitations and details. 41. Do not rely exclusively on the Rear Cross-Traffic Alert system. Always look over your shoulder and use your mirrors to confirm rear clearance.

DISCLOSURES

There are limitations to the function, detection and range of the system. See *Owner's Manual* for additional limitations and details. **42.** Qi wireless charging may not be compatible with all mobile phones, MP3/WMA players and like models. When using the wireless charging system, avoid placing metal objects between the wireless charger and the mobile device when charging is active. Doing so may cause metal objects to become hot and could cause burns. **43.** Toyota strives to build vehicles to match customer interest and thus they typically are built with popular options and option packages. Not all options/packages are available separately and some may not be available in all regions of the country. See toyota.com for information about options/packages commonly available in your area. If you would prefer a vehicle without any or with different options, contact your dealer to check for current availability or the possibility of placing a special order. Color(s) depicted may vary based on multiple factors, including ambient lighting and the format in which it is being viewed (e.g., computer, mobile device or print). **44.** The Tire Pressure Monitor System alerts the driver when tire pressure is critically low. For optimal tire wear and performance, tire pressure should be checked regularly with a gauge; do not rely solely on the monitor system. See *Owner's Manual* for additional limitations and details. **45.** The *Bluetooth*® word mark and logos are registered trademarks owned by Bluetooth SIG, Inc., and any use of such marks by Toyota is under license. A compatible *Bluetooth*®-enabled phone must first be paired. Phone performance depends on software, coverage and carrier. **46.** Rated for 12 volts/10 amps. See *Owner's Manual* for additional limitations and details. **47.** Vehicle Stability Control is an electronic system designed to help the driver maintain vehicle control under adverse conditions. It is not a substitute for safe and attentive driving practices. Factors including speed, road conditions, weather and driver steering input can all affect whether VSC will be effective in preventing a loss of control. See *Owner's Manual* for additional limitations and details. **48.** Brake Assist is designed to help the driver take advantage of ABS and is not a substitute for safe driving practices. Braking effectiveness also depends on proper vehicle maintenance, tire and road conditions. See *Owner's Manual* for additional limitations and details. **49.** Smart Stop Technology® operates only in the event of certain contemporaneous brake and accelerator pedal applications. When engaged, the system will reduce power to help the brakes bring the vehicle to a stop. Factors including speed, road conditions and driver input can all impact stopping distance. Smart Stop Technology® is not a substitute for safe and attentive driving and does not guarantee instant stopping. See *Owner's Manual* for additional limitations and details. **50.** Whiplash-Injury-Lessening front seats can help reduce the severity of whiplash injury in certain rear-end collisions. **51.** Hill Start Assist Control is designed to help minimize backward rolling on steep ascents. It is not a substitute for safe driving judgment and practices. Factors including speed, grade, surface conditions and driver input can all affect whether HAC will be effective in preventing a loss of control. See *Owner's Manual* for additional limitations and details. **52.** The engine immobilizer is a state-of-the-art anti-theft system that is initiated when you insert your key into the ignition switch or bring a Smart Key fob into the vehicle. The engine will only start if the code in the transponder chip inside the key/fob matches the code in the vehicle's immobilizer. The transponder chip is embedded in the key/fob and can be costly to replace. If you lose a key or fob, your Toyota dealer can help or go to www.aloa.org to find a qualified locksmith in your area who can perform high-security key service. **53.** ToyotaCare covers normal factory scheduled maintenance for two years or 25,000 miles, whichever comes first. Certain models require a different maintenance schedule as described in their *Maintenance Guide*. 24-hour Roadside Assistance is also included for two years, unlimited mileage. Roadside Assistance does not include parts and fluids, except emergency fuel delivery. See Toyota dealer for details and exclusions. Valid only in the continental U.S. **54.** This floor mat/floor liner was designed specifically for use in your model and model year vehicle and SHOULD NOT be used in any other vehicle. To avoid potential interference with pedal operation, each mat/liner must be secured with its fasteners. Do not install a floor mat/floor liner on top of an existing floor mat/floor liner. **55.** Do not overload your vehicle. See *Owner's Manual* for weight limits and restrictions. **56.** Meets Tier 2/Bin 3 Federal emissions standard. **57.** Amazon, Alexa and all related marks are trademarks of Amazon.com, Inc. or its affiliates. Certain functions require adequate signal strength and/or smartphone technology/connectivity. Not all Amazon Alexa functionality is available for in-vehicle use. See applicable app for details. Download of the Toyota app and Toyota+Alexa app are both required to begin in-vehicle use of Alexa. Data charges may apply for certain functions. Apps and services subject to change at any time without notice. To learn more, go to <https://www.toyota.com/audio-multimedia>. To learn more about Toyota's data collection, use, sharing and retention practices, please visit <https://www.toyota.com/privacyvts/>.

Toyota strives to build vehicles to match customer interest and thus they typically are built with popular options and option packages. Not all options/packages are available separately and some may not be available in all regions of the country. See toyota.com for information about options/packages commonly available in your area. If you would prefer a vehicle without any or with different options, contact your dealer to check for current availability or the possibility of placing a special order.

Color(s) depicted may vary based on multiple factors, including ambient lighting and the format in which it is being viewed (e.g., computer, mobile device or print).

Some vehicles are shown with available equipment. Seatbelts should be worn at all times. For details on vehicle specifications, standard features and available equipment in your area, contact your Toyota dealer. A vehicle with particular equipment may not be available at the dealership. Ask your Toyota dealer to help locate a specifically equipped vehicle.

All information presented herein is based on data available at the time of posting, is subject to change without notice and pertains specifically to mainland U.S.A. vehicles only. Vehicles shown may be prototypes, shown using visual effects and/or shown with options. Actual models may vary.



Mobility

For Toyota Mobility program details, go to www.toyota.com/mobility or call the Toyota Brand Engagement Center at 1-800-331-4331